



**Arrelic**<sup>®</sup>  
Your Reliability Partner.



# TRANSFORMING MANUFACTURING

*Industry 4.0 and Connected Factory Solutions*

A photograph of an industrial plant at dusk, featuring large cylindrical storage tanks, a tall distillation column, and various piping and scaffolding. The scene is illuminated by warm lights from the facility, with a blue sky and distant mountains in the background.

**ARRELIC.COM**



**A  
RELIABLE PLANT  
IS A SAFE &  
COST-EFFECTIVE  
PLANT**



**Arrelic**<sup>®</sup>  
Your Reliability Partner.

# Our Services



Asset Performance Management



IIoT Products and AI/ML Platform



Reliability Engineering



Industry 4.0 Digital Transformation



Predictive Maintenance



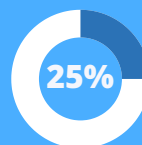
Remote Monitoring For Industrial Assets



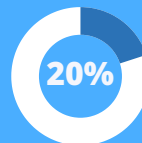
## ABOUT US

We help manufacturing companies reduce their operation and maintenance costs through technological innovation in Asset Performance Management, Reliability Engineering, Predictive Maintenance, Industry 4.0, AI & ML and Skill Development.

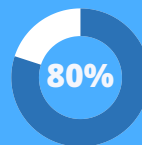
## OUR VALUE TO CLIENTS



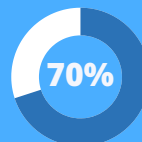
*Reduction in Maintenance Cost*



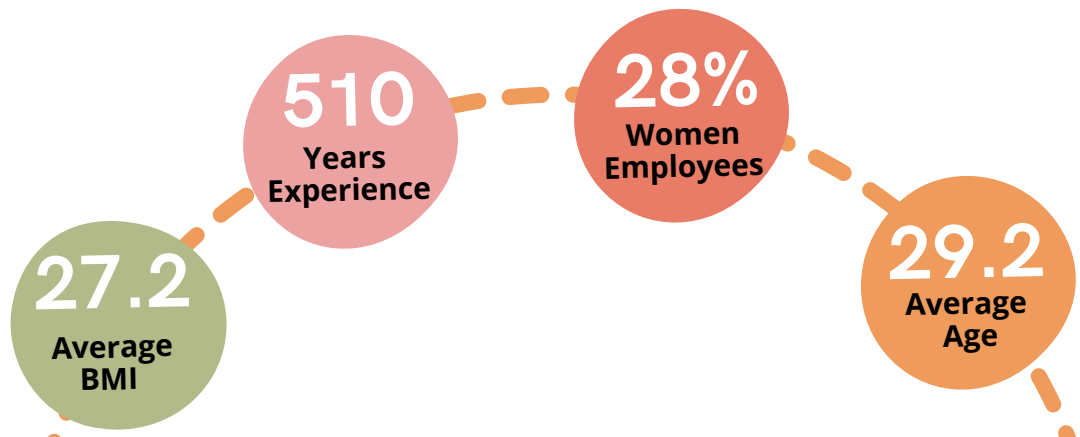
*Improve in Productivity & Availability*



*Reduction in Machine Breakdown*



*Reduction in Human Interference*



## **NEZAR AL-SHAMMASI, Global CEO**

Principal Director – SMRC, Chairman - the Gulf Society of Maintenance Professionals (GSMP), Ex. Corporate Maintenance Services Director, Aramco, Saudi Arabia.

## **DEEPAK KUMAR SAHOO, Founder**

MS, PGDEM, B.Tech in Mechanical Engineering. 15+ Experience in manufacturing and Reliability Certified Reliability Leader (CRL) & CMRP. Worked in APAC, EMEA, Africa and Eastern Europe in Asset Management.



## **HUSAIN AL-ALI, Managing Partner**

Chairman - Education and Certification Committee - GSMR, Ex. GM - Engineering, Maintenance & Production in ALBA, Bahrain. 37+ years of experience in Maintenance Management, Improvement and Projects.

## **JYOTI BHUSAN PANY, Director**

Chairman – ICC, Odisha 2021-23 (Indian Chamber Of Commerce), President - TiE Bhubaneswar, President of Odisha Golf Association (OGA), Past Chairman Confederation of Indian industries (CII), Odisha 1994-95.



## **PRAVAT KUMAR SENAPATY, Head – Predictive Maintenance**

PhD (Reliability + Management, Post Graduate Mechanical in Plant Engineering, 37+ Experience in petrochemicals, Oil & GAS, Metal industries in the field of Machinery Diagnostics, Reliability Management.

**CAN YOUR  
MANUFACTURING  
PLANT AFFORD TO  
LOSE  
\$300,000  
IN 1 HOUR ?**

**USD 1,400,000,000,000.00**



**\$1.4T\***

**LOSSES FROM MACHINE  
DOWNTIME**



*Technology is changing our approach to maintenance*

## Use of maintenance Strategy - Today

Reactive 40%	Preventive 30%	On Condition 20%	Predictive 10%
-----------------	-------------------	---------------------	-------------------

## Use of maintenance Strategy - Future

Reactive 10%	Preventive 20%	On Condition 30%	Predictive 40%
-----------------	-------------------	---------------------	-------------------



**1 out of 1000 companies are in best in class & achieved 2% downtime**



- 1.0 Paper - based systems and processes
- 2.0 Transactional systems, CMMS - EAM, time-based maintenance
- 3.0 Instrumentation of assets (RCM and analysis; condition and Usage - maintenance)
- 4.0 IIoT, AR/VR, Mobile, Predictive Analytics

	Laggard	Best in Class	Industry Average
OEE	75%	88%	81%
Downtime	18%	02%	11%

\* Source: Aberdeen Group \*\* Based on average manufacturing condition



**Aerospace & Defence**



**Automobiles**



**Cement**



**Chemical**



**Facility Management**



**FMCG**



**Glass Manufacturing**



**Metal & Mining**



**Msme & Small Business**



**Oil & Gas**



**Pharmaceuticals**



**Power**



**Public Sector**



**Pulp & Paper**



**Transport & Logistic**

**INDUSTRY EXPERTISE**

## ASSET PERFORMANCE MANAGEMENT



### IAPM

Digital Platform for integrated Asset Performance Management



### PDMAS

Digital Platform for Predictive Analytics and Maintenance



### RCM

Digital Platform for RCM, FMEA, ACA



### RBI

Digital Platform for Risk-Based Inspection



### RIS

Digital Platform for Reliability Instrumented System



### RCFA & DE

Digital Platform for Root Cause Failure Analysis & DE



### PMO

Digital Platform for PM Optimisation



### RAM & DFR

Digital Platform for RAM studies and DFR

## OPERATIONAL EXCELLENCE



### TPM

Digital Platform for Total Productive Maintenance



### SIX SIGMA

Digital Platform for DMAIC model based Six Sigma

## WORK MANAGEMENT & ASSESSMENT



### ESWM

Digital Platform for 5S, FUGUAI, GEMBA, QC, KAIZEN



### PRRA

Digital Platform for Plant Reliability Readiness Assessment

## TRAINING DEVELOPMENT & CERTIFICATION



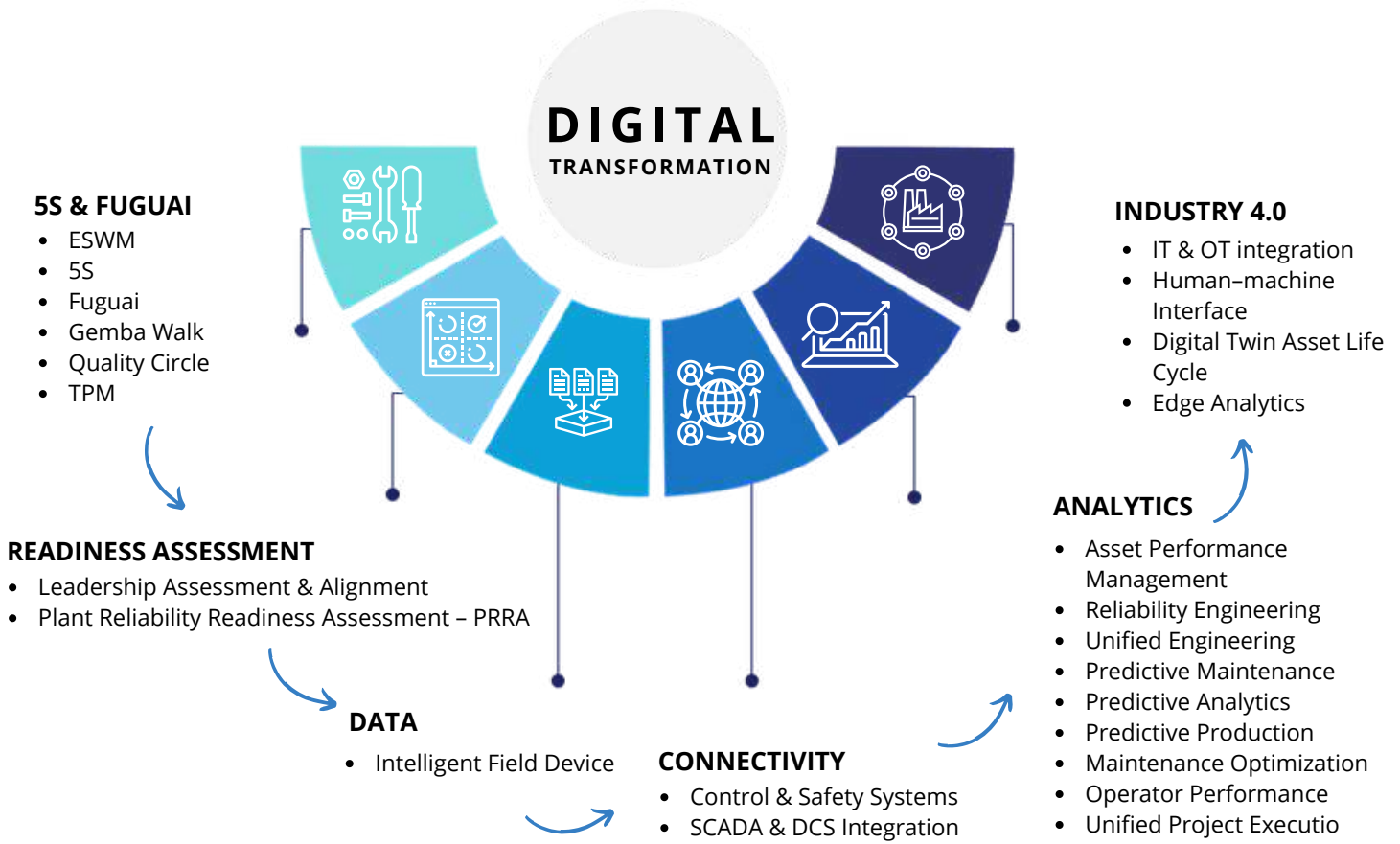
### RELIABILITYQ

AI Based Virtual E-learning digital Platform



### IIOT SENSORS

Hardware products



## SERVICES

Plant Reliability Readiness Assessment

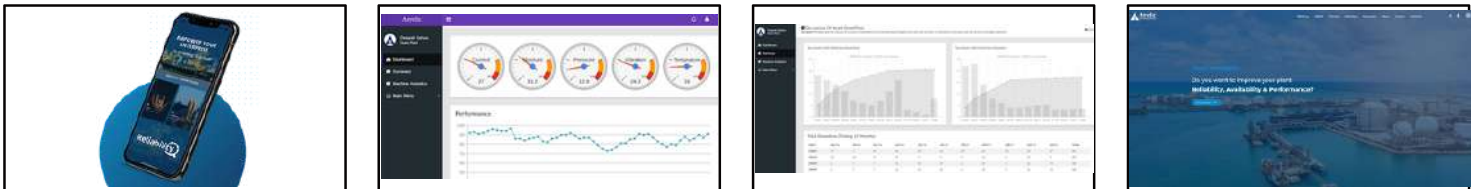
Industry Expertise

Operational & Maintenance Strategy

Automation, Analytics Architecture

TNI / TNA

## OWNED / INHOUSE DEVELOPMENT



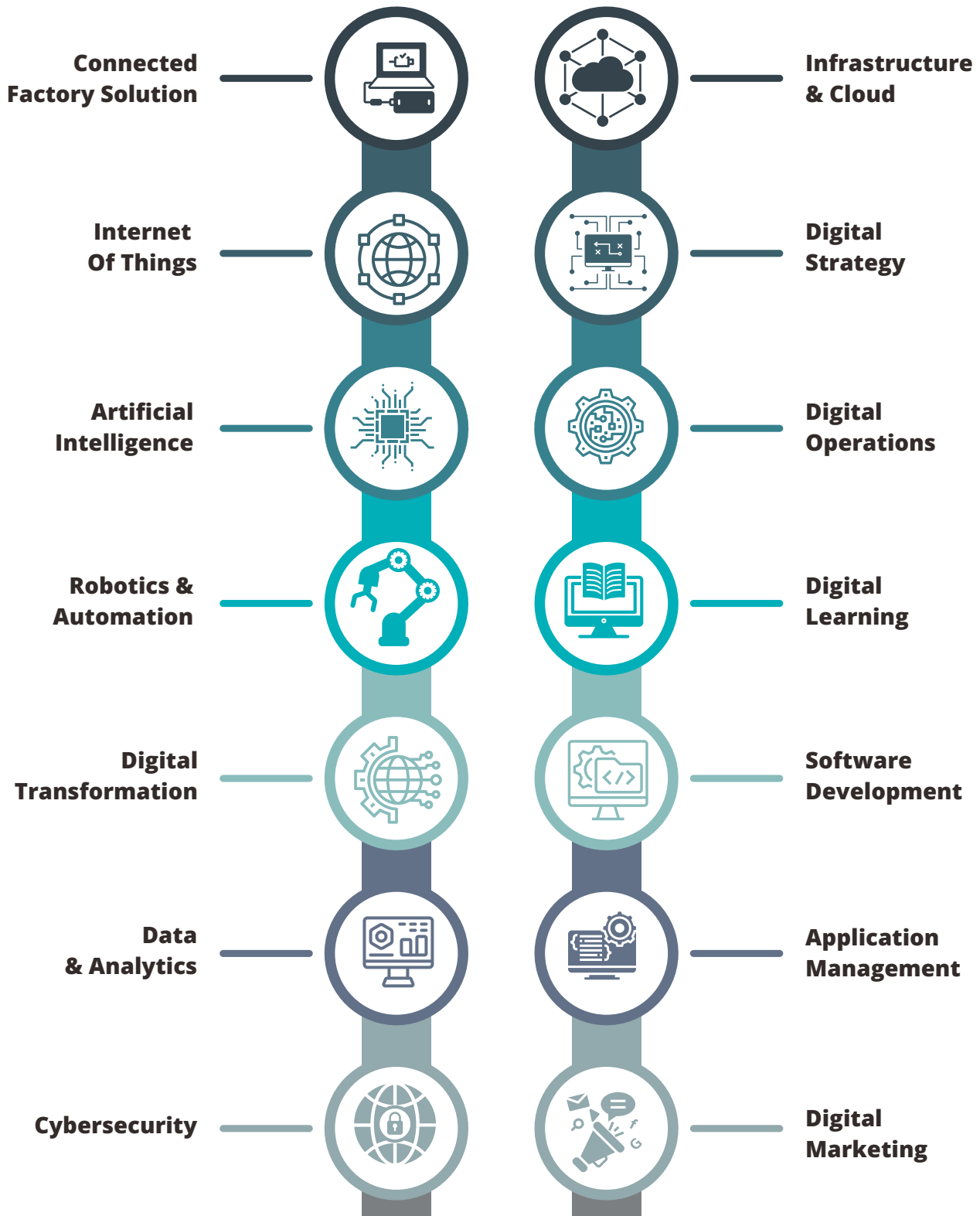
## OUTSOURCE (GATEWAY DAMS)





## WE BUILD INTELLIGENT DIGITAL EXPERIENCE

CAPACITY BUILDING # TRANSFORMATION # EMPOWERMENT



# APM SOLUTIONS

## INDUSTRY NEED TO FOCUS ON



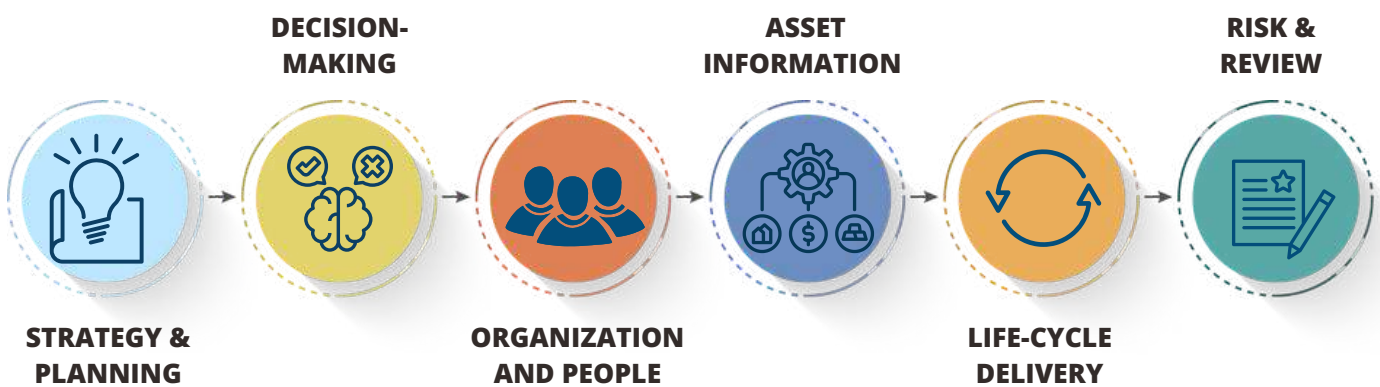
## ASSET PERFORMANCE MANAGEMENT

**AN EFFECTIVE APM  
SYSTEM CAN IMPROVE  
EBITDA AS MUCH AS  
15-25%**

## PLANT RELIABILITY READINESS ASSESSMENT

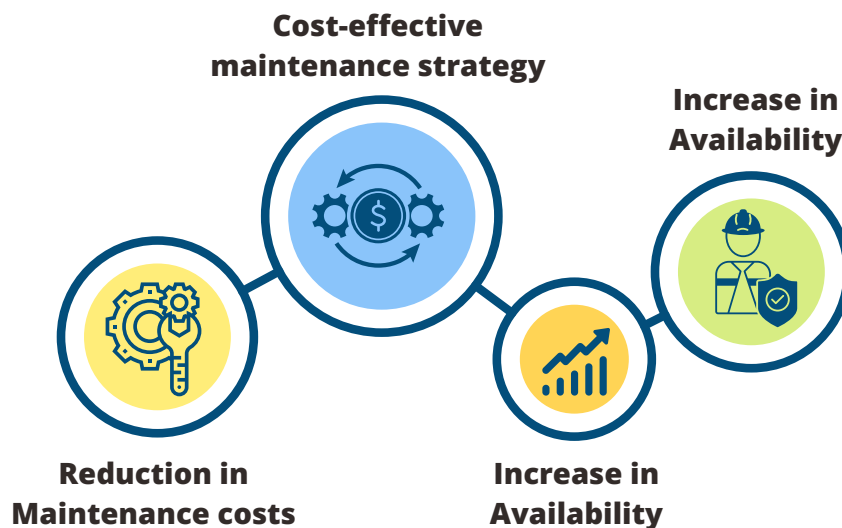
Plant Reliability Readiness Assessment (PRRA) can be a powerful way of provide a comprehensive assessment of your plant functions, Process, Operations, reliability program and maintenance activities, including a gap and barrier analysis. The intent of the plant audit is to identify inherent deficiencies that may adversely affect plant performance.

### PRRA : BASIC MODULES



### PRRA : APPROACH

We designed our Plant Reliability Readiness Assessment (RRA) Model with a step-by-step robust demonstration and training(D&T) as well as Best-in-class Assessment Review Mechanism(ARM) balancing availability, cost, time to value and risk associated with the equipment. With Reliability Readiness Assessment (RRA) approach, we at Arrelic assures our clients;



## BUILDING ENERGYMANAGEMENT SYSTEM

Make your building smarter, efficient, comfortable for your employees or customers and Save up to 35% on your building energy costs with Arrelic BEMS.



**HOTEL**



**OFFICES**



**MALL**



**HOSPITALS**



**EDUCATIONAL**



**GOVERNMENT  
BUILDING**



492+

Participants across  
63 countries  
trained by Arrelic  
on RCM

16+

Certified  
Dedicated  
Resources

4+

Projects  
end to end RCM  
implementation.

## OUR EXPERTISE IN RCM

### RELIABILITY CENTERED MAINTENANCE (RCM)

Reliability Centered Maintenance (RCM) is the most cost-effective method your plant can use to develop an appropriate maintenance strategy that will keep production on pace with time.

12%

YoY % growth in  
Industries using RCM

34%

Downtime  
Reduction

56%

Cost  
Reduction

Predictive maintenance helps to eliminate catastrophic equipment failures, extends the operational life of machine components and reduces the costs of parts and labour. Arrelic specialize in a wide range of Predictive Maintenance services such as Vibration Analysis, IR Thermography, Wear Debris Analysis, and Motor Current Analysis.



**Arrelic provides both PdM equipments & skilled manpower for your Predictive Maintenance Journey**



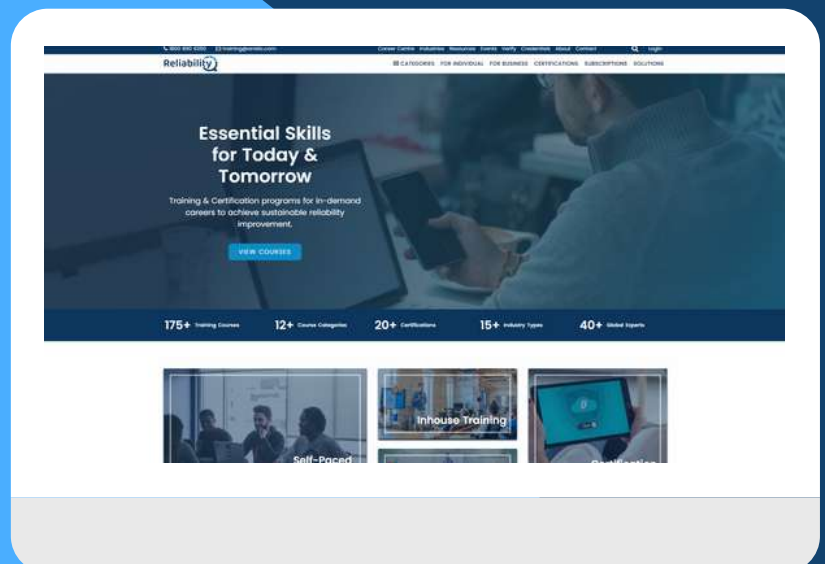


# LMS – DIGITAL PLATFORM

AI BASED VIRTUAL E-LEARNING  
LMS PLATFORM FOR YOUR  
BUSINESS

RELIABILITYQ PLATFORM FROM  
ARRELIC

Reliability



## TRANSFORMING ENGINEERING GRADUATES TO INDUSTRY EXPERTS



### WHAT WE OFFER

- 11 Months full-time training program with Guaranteed Employment.
- A unique multi-disciplinary program transforming the engineering graduates to industry professionals.
- Focus on Plant Asset Management, Predictive Maintenance and Reliability Improvement.
- Trained by World Class Industry Experts.
- Cater to the requirements over 16 different types of industries.
- Provides hands-on training to the participants on basics of Plant Maintenance, Strategy, Reliability Engineering, Planning, Scheduling, Project Management, RCM, PdM Technologies such as Vibration Analysis, Balancing, Laser Alignment, IR-Thermography, Ultrasonic, Oil Analysis, MCSA, NDT Techniques to identify, manage and eliminate plant failures.

#### **Participants of PMDE may get Career opportunity in any of the following roles**

- Maintenance Manager
- Maintenance Team Leader
- Reliability Engineer
- Predictive Maintenance Analyst
- Maintenance and Reliability Engineer
- Planning Engineer
- Production Engineer
- Maintenance Engineer
- CBM Engineer
- Manufacturing Excellence Analyst
- PdM Analyst
- Reliability Consultant
- O&M Engineer





# CAREER AT ARRELIC

We are looking for young talented professionals having various kind of educational backgrounds to assist us transforming the mode of manufacturing operation.

- Experience Professional →
- P M D Engineer →
- For Collage Graduates →
- Internship Opportunities →
- Live Projects →
- Campus Ambassadors →

**SEARCH AND APPLY →**

[arrelic.com/career](http://arrelic.com/career)

## CREATING A WORLD-CLASS TEAM

### A BELIEVE IN OUR PEOPLE

Arrelic relies on the expertise of its people to provide solutions and services that deliver value to customers involved in consulting, predictive maintenance, Training & Development, reliability software solution and predictive Analytics.

Recognizing that people are our most valuable asset, we're continuously investing in our people, ensuring that our organizational needs match their individual skills, capabilities and expectations.

In doing so, we're constantly developing and enhancing a team capable of working in close proximity to customers worldwide, meeting and often exceeding their needs. We view the quality of our human resource management as fundamental to the success of our business.



### GRADUATE PROGRAM

To attract high potential graduates and develop them for future managerial and high technical responsibilities in Asset Management and Reliability Engineering.



### EXPERIENCED PROFESSIONALS

To transfer the technical know-how, enhance expertise and to develop consulting and know how skills of our employees.



### ASSESSMENT & ENRICH PROGRAM

To assess our employees on Leadership & Achievements using a global approach and enrich them periodically.

# PARTNERS & CLIENTS



## Oil & Gas - Customers



## Metal & Steel - Customers



## Other Industry - Customers



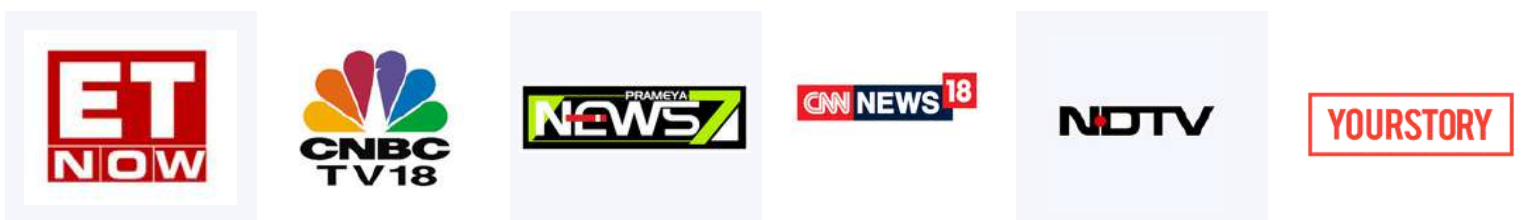
# MEDIA COVERAGE

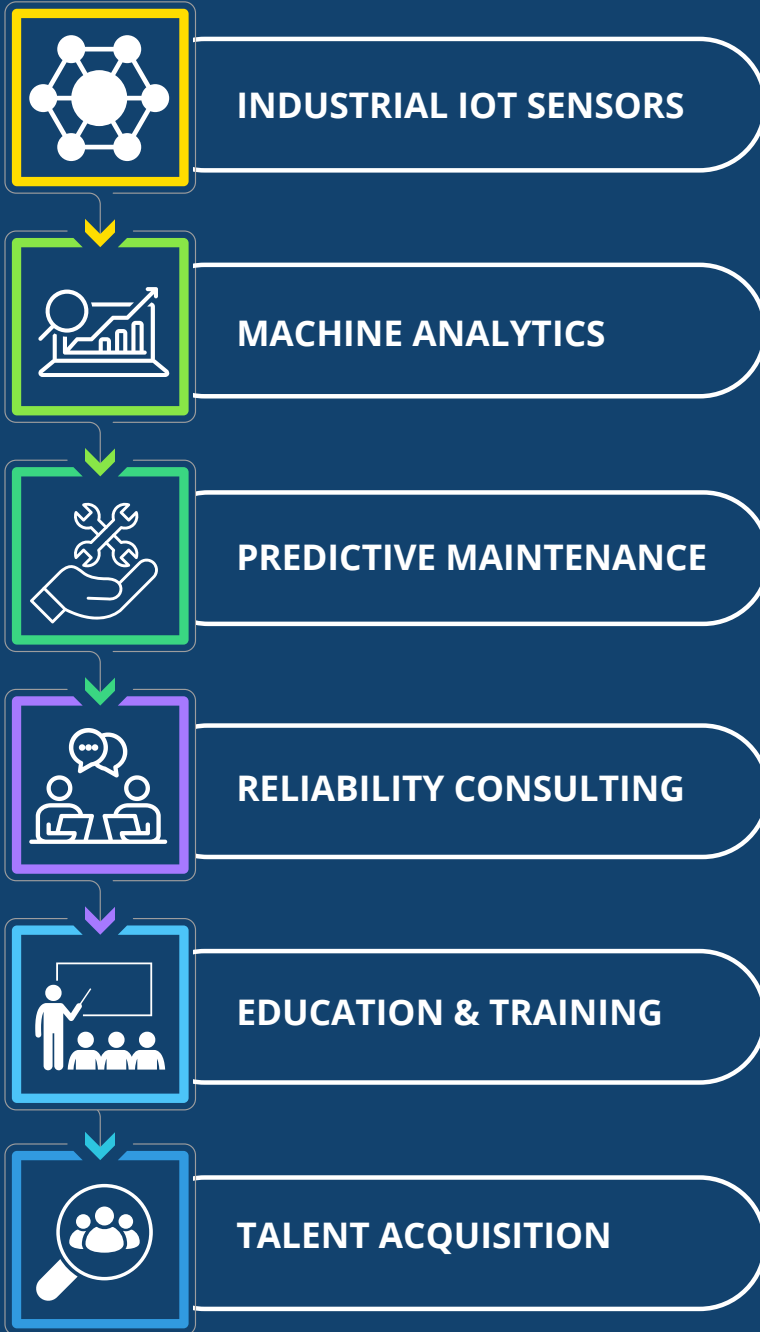


## AWARDS AND RECOGNITIONS



## ARRELIC MEDIA COVERAGE





*arrelic.com*  
*info@arrelic.com / training@arrelic.com*  
*Toll Free : 1800 890 6250 / 1800 889 6350*  
*Mobile : +91 98619 14400*  
*LEI: 984500A013C40F436C26*

306, Webel Tower - II, BN-9, Sector V, Salt Lake,  
Bidhannagar, Kolkata, India - 700091

ARRELIC RELIABILITY PRIVATE LIMITED • ALL RIGHTS RESERVED

